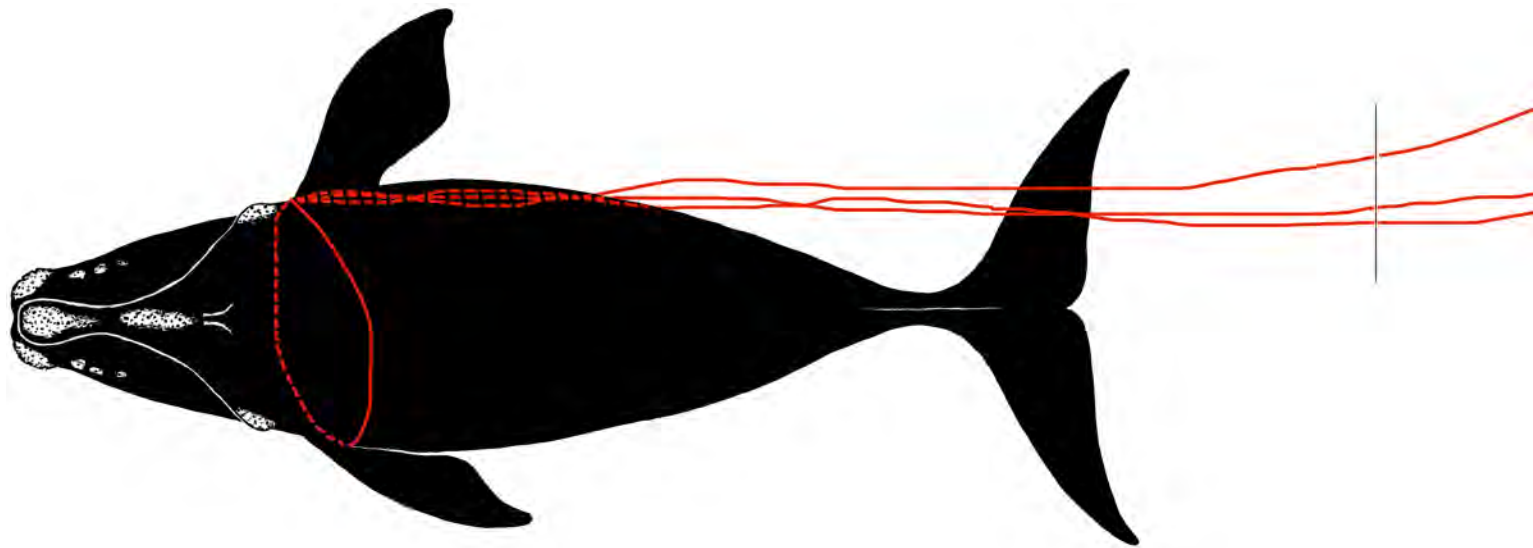


Species	Right Whale	Whale ID	Eg #3294
----------------	--------------------	-----------------	-----------------

Date first observed entangled (date seen prior without gear)		08 Dec 2008 (14 Apr 2008)			
Sex	Female	Birth year	Unknown	Age at entanglement	7+

Case study ID	PCCS	NMFS	GEAR ID
	WR-2008-33	E39-08	J120808
Gear sample collected?	Yes	Gear type	Trap/pot



Reproductive prior to/after entanglement detection?		No/ Yes			
Entanglement injury severity		Moderate			
Entanglement configuration risk		High			
Wound severity	Mouth	Head/ Rostrum	Flippers	Body	Flukes
	Medium	Medium	Unknown	Medium	Medium
Duration of time carrying gear		Minimum 10 days, maximum 291 days			
Disentangled?		No			
Status		Alive - Last sighted in 2014			
Number of prior entanglement interactions		2			

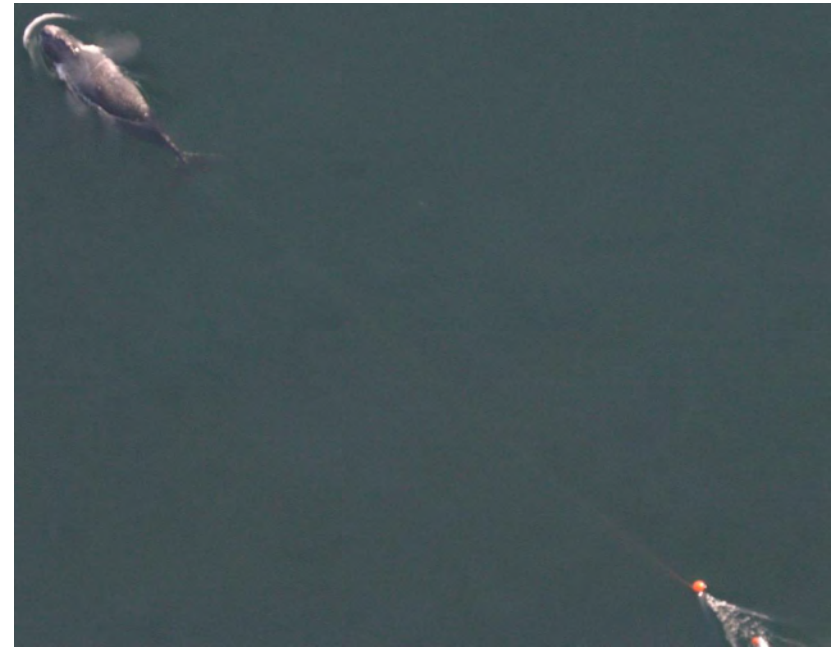
Entanglement configuration	Body wrap at level of flippers with three lines trailing aft of flukes to ~300feet.
Anchoring point(s)	Body
Gear configuration confidence	Low
Remaining questions	Some question remains if there was also a tight rostrum wrap (based on no evidence of line exiting mouth this seems unlikely); unclear if either flipper was wrapped.
Comments	Whale was telemetry-tagged and gear was later shed.

Polymer type		PP	PP
Gear component			
Rope diameter (inches)		5/16 (0.312)	5/16 (0.312)
Breaking strength (lbs)	Tested	1 560	1 670
	New	1 700	1 700

This case study was developed under NOAA Award # NA09NMF4520413 to the Consortium for Wildlife Bycatch Reduction, administered at the New England Aquarium, Boston, MA, USA (available at www.bycatch.org). See: Knowlton, A.R., J. Robbins, S. Landry, H.A. McKenna, S.D. Kraus, T. B. Werner. 2015. Effects of fishing rope strength on the severity of large whale entanglements. Conservation Biology DOI: 10.1111/cobi.12590



18 Dec 2008 GDNR



18 Dec 2008 WT/GA



18 Dec 2008 GDNR



18 Dec 2008 WT/GA



18 Dec 2008 GDNR

DATA SHEET

FORENSIC ANALYSIS OF ROPES WHALE ENTANGLEMENT PROJECT

SPECIMEN ID NO.

J120808rw

NMFS NO.

E39-08

Gear Description:

Several long sections of $\frac{5}{16}$ inch polypropylene orange rope. One coil included a length of $\frac{5}{16}$ inch polypropylene pale green rope about 100 feet long and spliced into a section of orange line. One swivel appeared in an orange line and one in the green indicating an endline. Gangions were apparent at some locations in the orange line indicating trap connections. The apparent use was for fixed trap gear.





Connecting orange to green and swivel halves.

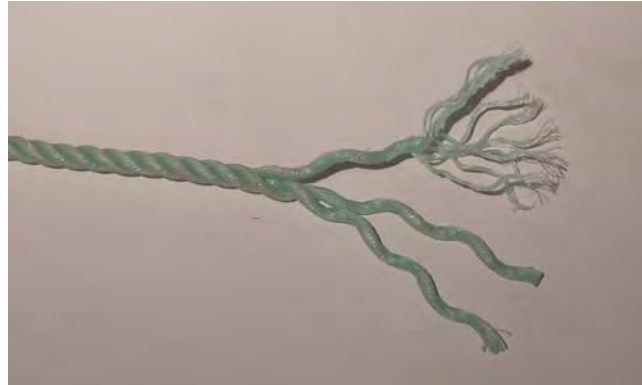


Gangion connection.

Rope description

J120808-1 : This is a $\frac{5}{16}$ inch pale green polypropylene rope. It has a very hard lay. Condition is very good. The line has 10 yarns per strand and 3 center yarns.

Tested (T) or adjusted (A) strength	Typical new strength	Rope condition
1,560 lbs (T)	1,700 lbs	Very good



J120808-2 : This is a $\frac{5}{16}$ inch orange polypropylene rope. It has a hard lay. Condition is very good. The line has 6 yarns per strand and 1 center yarn.

Tested (T) or adjusted (A) strength	Typical new strength	Rope condition
1,670 lbs (T)	1,700 lbs	Very good

